

# Aging

**Our Community Outcome:** Increase or maintain independent living factors for vulnerable adults 60 years of age and older with low incomes.

## COMMUNITY TRENDS

- 52% of respondents to the most recent 60+ Survey reported a very good quality of life.
- There was a slight decline between 2010 and 2015 in life satisfaction for adults 65+.
- There was an increase in social support for adults ages 75+ in the same time period.
- The percentage of those 65+ who live below poverty level has steadily hovered at around 6%.
- There is a nine year disparity in life expectancy between residents in Ypsilanti Township and those in the cities of Chelsea, Saline, and parts of Ann Arbor.
- There is a 14-year disparity based on race.

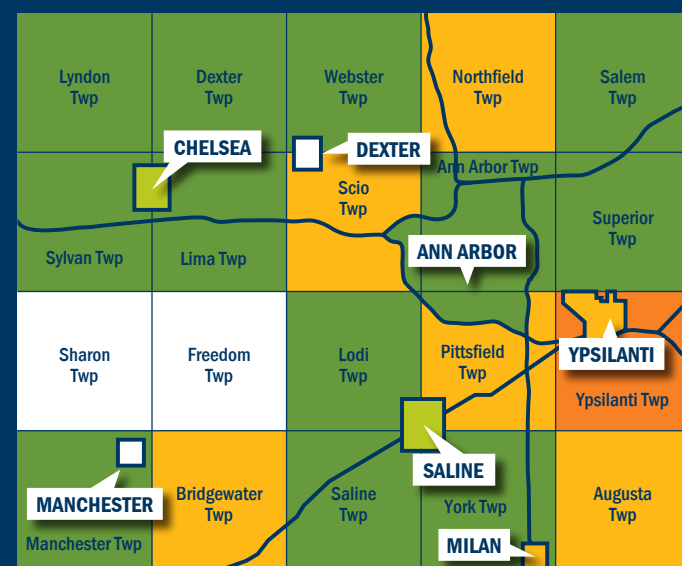
**SYSTEMS GOAL:** Increase or maintain independent living factors for vulnerable, low-income adults who are 60 years of age and older

## AGING ADULTS IN WASHTENAW COUNTY

### Mean Age of Death

Source: MDHHS Vital Statistics 2010-2013

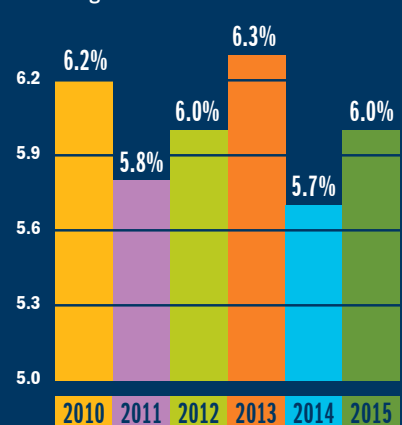
	White/Caucasian	Black/African American	Difference (Years)
Ann Arbor City	78	70	8
Pittsfield Township	73	62	11
Superior Township	77	64	13
Ypsilanti Township	69	62	7
Ypsilanti City	72	67	5
Washtenaw County	80	66	14



Jurisdictions with no color had fewer than 50 deaths between 2010 and 2014.

### Poverty Rate

Adults aged 60+



### Life Satisfaction

Responded "Highly satisfied/Satisfied," N=385

	2010	2015
Age 65-74	99%	96%
Age 75+	100%	97%

### Social/Emotional Support

Responded "Always/Usually" have access to support, N=385

	2010	2015
Age 65-74	85%	84%
Age 75+	72%	82%

## Community Dashboard

JULY 2018

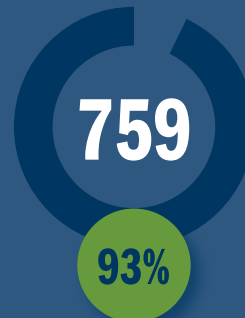
### PROGRAM LEVEL OUTCOMES

This section illustrates the total number of clients who reported achieving specified outcomes, and the corresponding percentage of achievement for all clients working on that outcome.

#### Senior Crisis Intervention



Clients seeking and receiving critical senior services



Clients who report the program helped get them the services they needed to move from crisis to stabilization



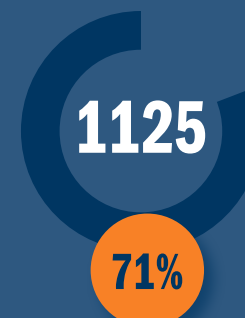
#### Senior Service Network Navigation



Clients seeking and receiving protective senior services



Clients who report the program helped get them the services they needed to maintain their independence



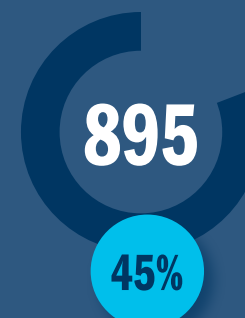
#### Senior Social Integration



People participating in program activities



People who report participation in program activities helped maintain their social integration status



### TRENDS FROM REPORTING



Transportation remains a persistent barrier for service delivery and access.



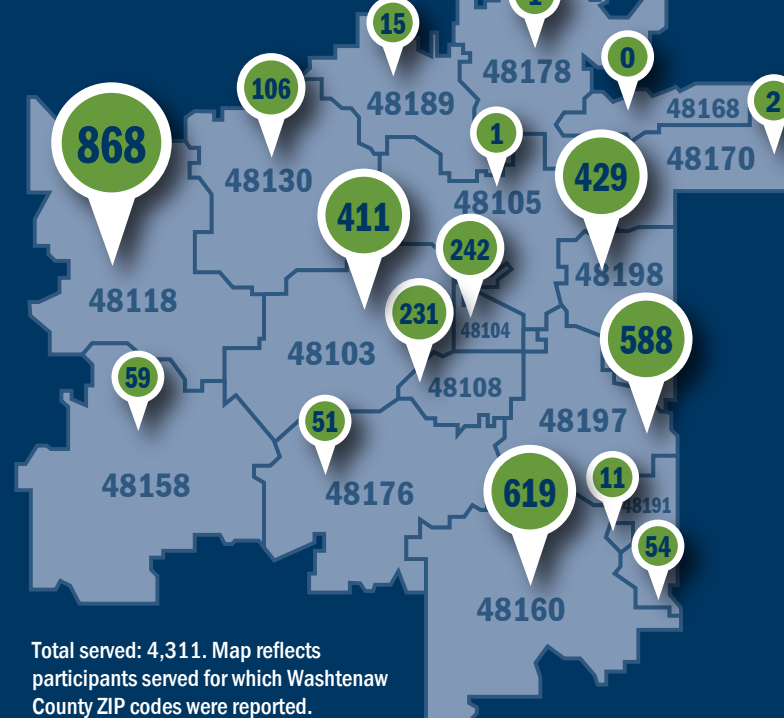
Lack of resources for staffing means wait lists and longer response times.



Older adults are reluctant to provide information about income level, which impacts data collection.

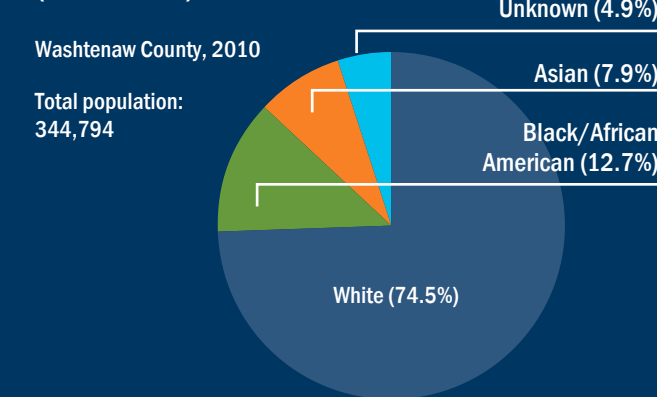
## DEMOGRAPHIC DATA

### Number of All WCF Participants Served, by ZIP Code (FIGURE 1)

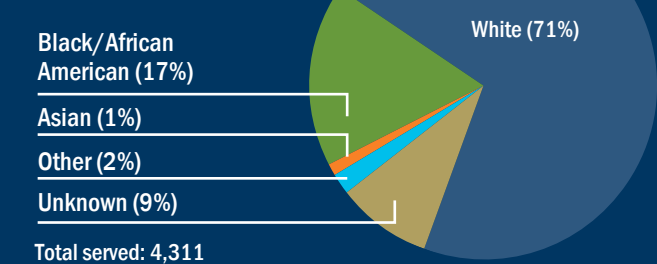


Total served: 4,311. Map reflects participants served for which Washtenaw County ZIP codes were reported.

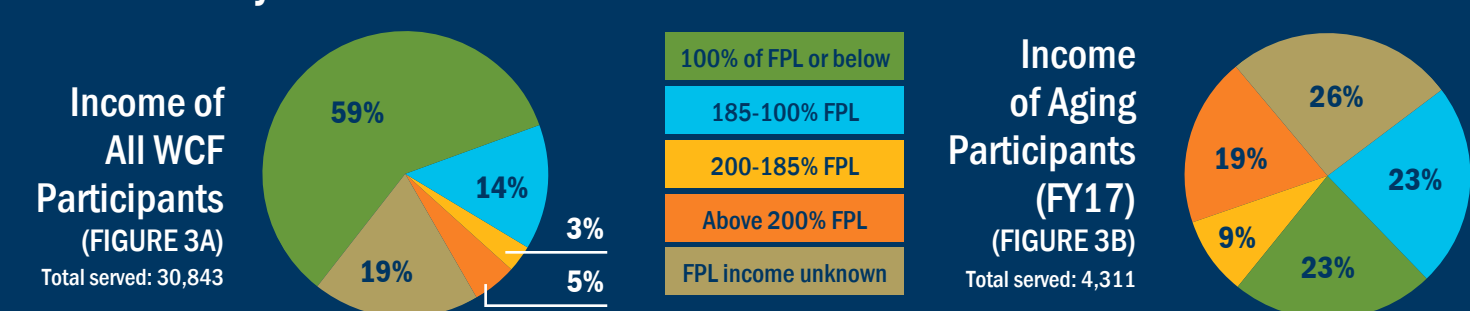
### Race of All WCF Participants (FIGURE 2A)



### Race of Aging Participants (FY17) (FIGURE 2B)



### Breakdown by Income



## POLICY UPDATES FROM AREA AGENCY ON AGING 1B

### FEDERAL UPDATES

On March 23rd, the President signed the Fiscal Year (FY) 2018 federal budget into law, providing the most significant funding increases for Older Americans Act programs since 2010.

Key increases to Older Americans Act programs, which will support Washtenaw county's aging network include:

- Title III-B Supportive Services, which funds a variety of social service programs, including in-home personal care, chore service, and housekeeping, was increased by 10%.
- Congregate nutrition programs were increased by 9%.
- Home Delivered Meal funding was increased by 8%.
- Family Caregiver Support programs were increased by 20%.

- Funding for evidenced-based health programs was increased by 25%.
- Nursing Home Ombudsman funding was increased by 5%.

The State Health Insurance Program (SHIP), which funds Michigan's Medicare Medicaid Assistance Program (MMAP) program received a slight increase in funding for the remainder of FY 2018.

### STATE/LOCAL UPDATES

The Silver Key Coalition is requesting a \$3 million funding increase for in-home services funded by Michigan's Aging Adult Services Agency. If the \$3 million increase is included in the final budget in July, it is projected that this increase would enable the Aging Network to serve 2,618 more seniors with in-home services, and 703 more people will receive home delivered meals.

Washtenaw Coordinated Funders (WCF) is meeting the needs of our community's most vulnerable in four priority areas through three funding components intended to: Support human services programming; Build nonprofit capacity; Foster community collaboration and systems-level change. WCF includes the following partners: Ann Arbor Area Community Foundation (AAACF); Office of Community and Economic Development (OCED), representing Washtenaw County, Urban County and the City of Ann Arbor; United Way of Washtenaw County (UWWC); RNR Foundation; Saint Joseph Mercy Ann Arbor (SJMAA). For more information, visit our website: [coordinatedfunders.org](http://coordinatedfunders.org).